

FOR LEASE

Holyoke Plaza

Holyoke Avenue, Lakeville, MN 55044



Presented By

Stephanie (Hotzler) Scherer

Development & Brokerage Associate
612.309.9495 cell
952.469.4800 office
Stephanie@MetroEquityLLC.com

Greg LaMere

Development & Brokerage Associate
612.387.8557 cell
952.469.4800 office
Greg@MetroEquityLLC.com

Metro Equity Management LLC

Property Information

Location:

Intersection of Holyoke Avenue and City of Lakeville's Market Plaza

Tenants

Mainstreet Coffee Café / Mainstreet Afterhours Wine Bar, Dakota Curling, Pink Door Boutique, Flora Etc, and Cornerstone Copy

Available Square Feet

3,076 square feet

Minimum Divisible

1,479 square feet (20772 Holyoke Avenue)

1,597 square feet (20770 Holyoke Avenue)

Demographics

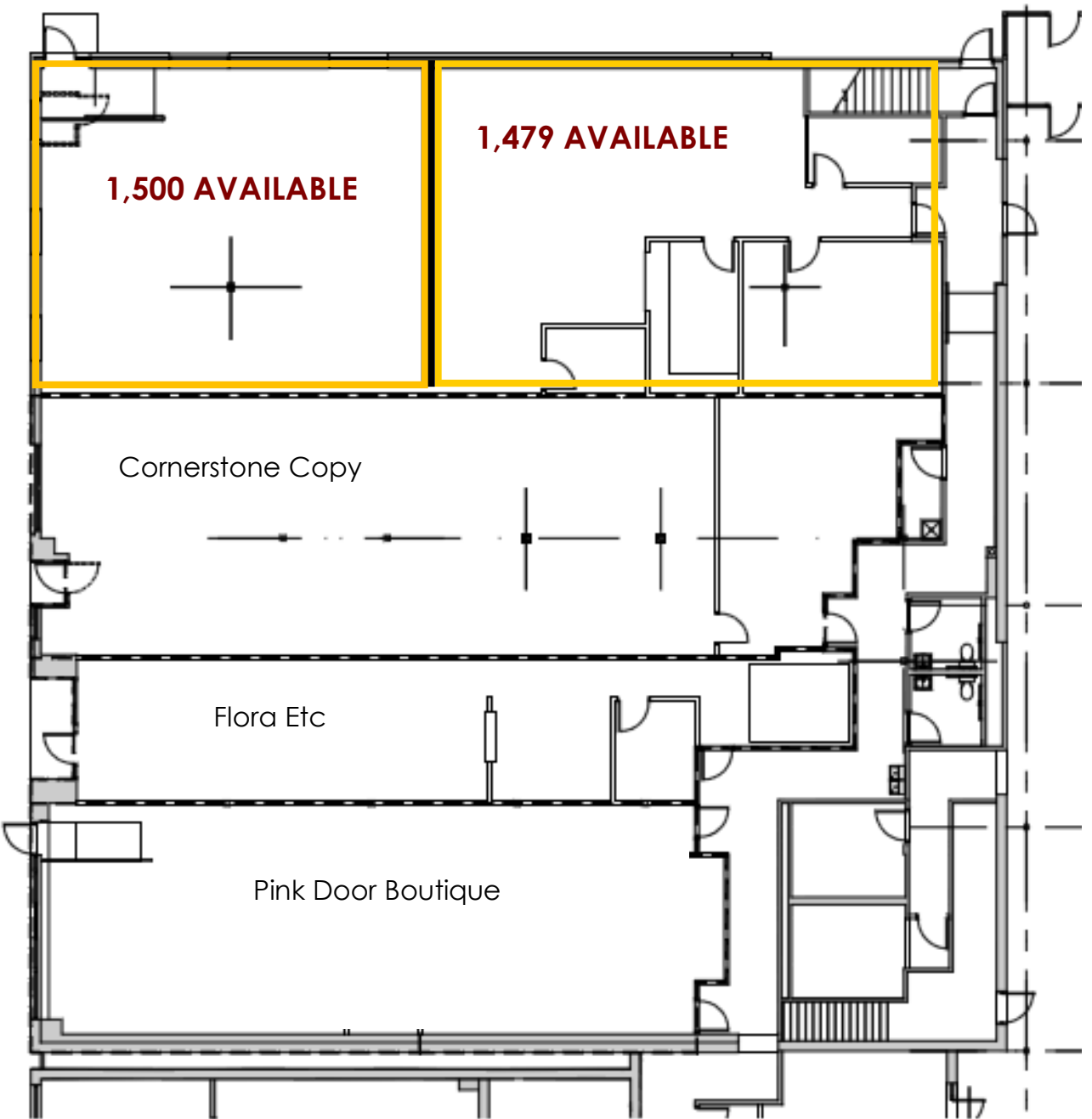
Summary	1.0 Mile	3.0 Mile	5.0 Mile
Population			
2015	6,921	19,348	76,787
Households			
2015	2,528	6,569	25,896
Median HH Income			
2015	\$80,469	\$97,059	\$94,693
Average HH Income			
2015	\$89,112	\$108,201	\$112,224

Source: ESRI, www.esri.com/bao

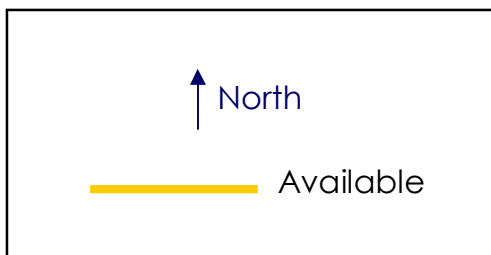
Lakeville Statistics

- Growing Community
Lakeville issued 361 single family home building permits in 2015. Leading the metro area for permits for the third year in a row and over 700 platted lots for further development
- Commercial Development
In 2015, Lakeville had its highest ever valuation for Commercial and Industrial permits at over \$45 million
- Downtown Lakeville Beautification
2016 / 2017 The City of Lakeville and the Downtown Lakeville Business Association is working together to formulate a continued effort to create an inviting and beautiful downtown setting

Dakota Curling Located Here



Mainstreet Coffee Café / Mainstreet After Hours Located Here



Aerial



Metro Equity Management LLC

Area Map

