

FOR LEASE
20830 Holt Avenue

Lakeville, MN 55044



Presented By

Stephanie Scherer

Development & Brokerage Associate
612.309.9495 cell
952.469.4800 office
Stephanie@MetroEquityLLC.com

Greg LaMere

Development & Brokerage Associate
612.387.8557 cell
952.469.4800 office
Greg@MetroEquityLLC.com

Metro Equity Management LLC

Property Information

Location:

Intersection of Holt Avenue and 208th Street West

Tenants

JetterClean, Photofetti, Platinum Builders

Available Square Feet

Office Space - About 1,500 square feet

Industrial / Storage - 6,500 square feet

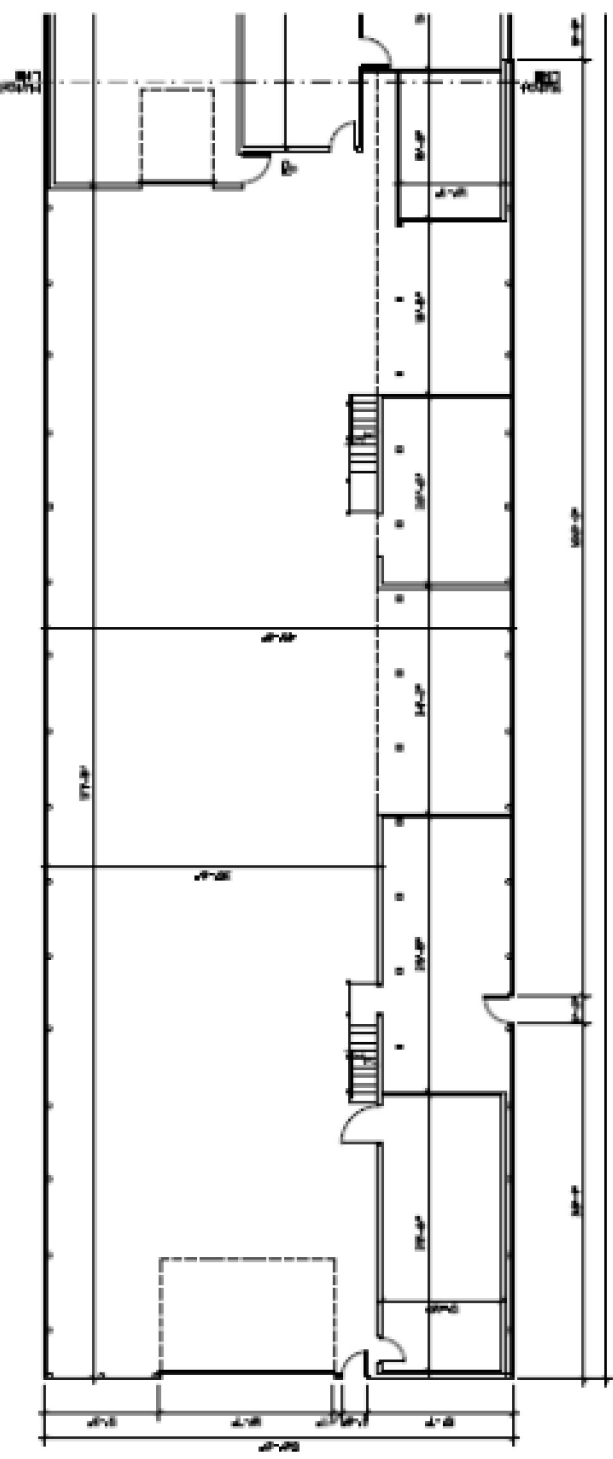
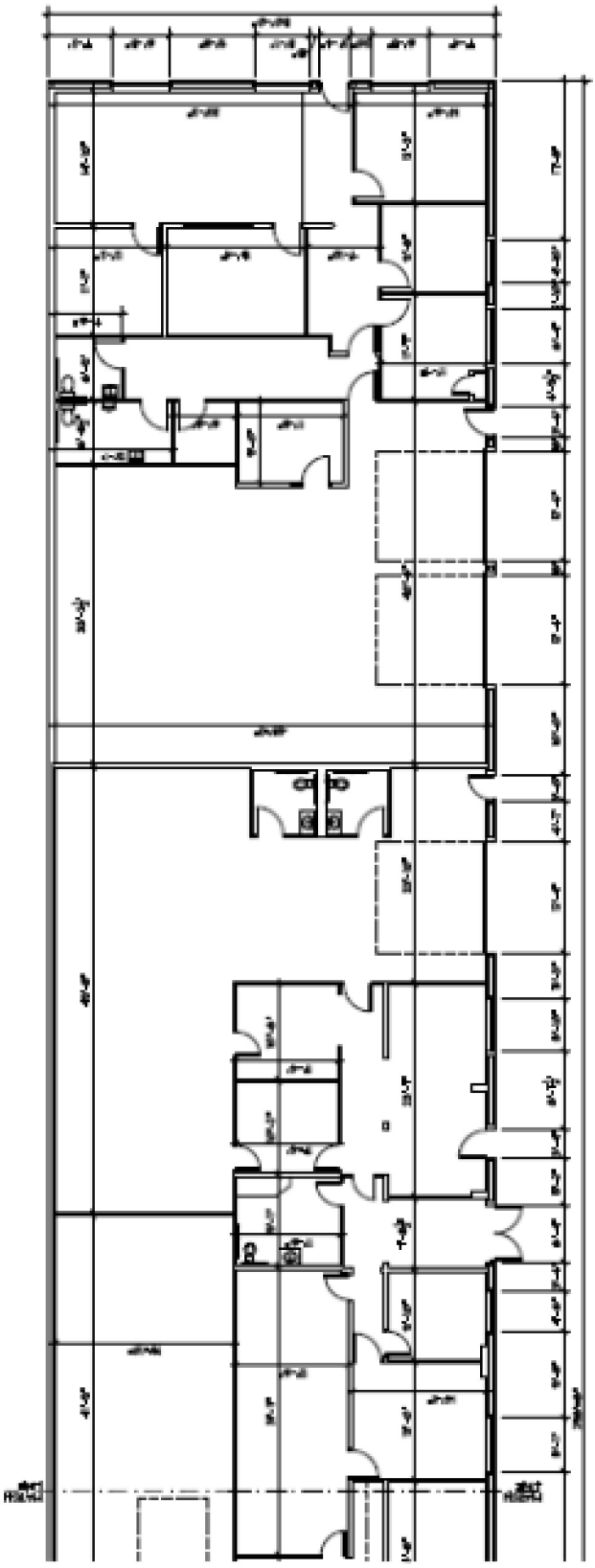
Demographics

Summary	1.0 Mile	3.0 Mile	5.0 Mile
Population			
2000	3,593	10,933	53,426
2008	5,066	16,302	68,587
2013	5,789	18,732	76,883
Households			
2000	1,337	3,629	16,969
2008	1,936	5,513	22,381
2013	2,228	6,366	25,234
Median HH Income			
2000	\$55,328	\$66,034	\$70,975
2008	\$78,073	\$96,690	\$103,817
2013	\$91,822	\$108,988	\$121,153
Average HH Income			
2000	\$62,099	\$75,185	\$81,530
2008	\$90,213	\$111,587	\$122,279
2013	\$106,040	\$137,577	\$155,195

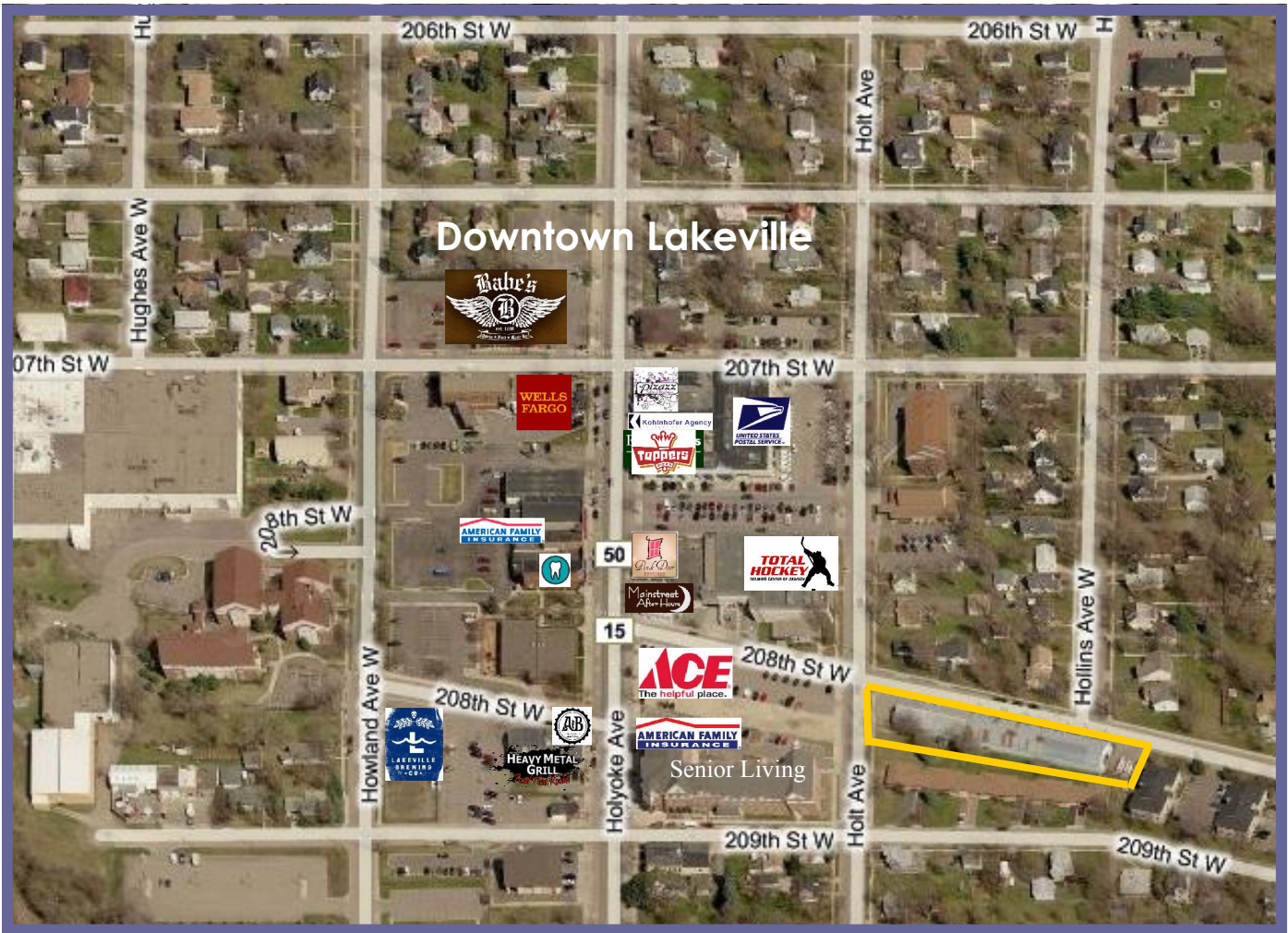
Metro Equity Management LLC

NO

WALL BOARD OFFICES 1



Aerial



Area Map

